



Plastic Bottle with Graduations

These basic bottles have graduations and dilution ratios embossed into them.

- Made with recyclable and FDA-compliant HDPE
- Can be customized with UV silk screening
- 28/400 mm neck finish fits a variety of popular trigger sprayers



ITEM	DESCRIPTION	SIZE	CS QTY	MIN ORDER
5022WG	Natural - 22 oz.	8 3/8" H x 2 3/8" Dia.	100/cs	1 cs
5024WG	Natural - 24 oz.	3 1/2" Dia. x 7 7/8" H	96/cs	1 cs
5032WG	Natural - 32 oz.	3 1/2" Dia. x 9 3/8" H	96/cs	1 cs



Graduated Bottle with Grooved Grip

Grooved grip bottles have an ergonomic design, allowing for a better hold.

- Made with recyclable and FDA-compliant HDPE; embossed graduations
- Can be customized with UV silk screening
- 28/400 mm neck finish fits a variety of popular trigger sprayers



ITEM	DESCRIPTION	SIZE	CS QTY	MIN ORDER
5024HG	Natural - 24 oz.	3 1/2" Dia. x 7 7/8" H	96/cs	1 cs
5032HG	Natural - 32 oz.	3 1/2" Dia. x 9 3/8" H	96/cs	1 cs



Plastic Bottle with Grooved Grip

Grooved grip bottles have an ergonomic design, allowing for a better hold.

- Made with recyclable and FDA-compliant HDPE; no silicone in/on bottles
- No graduations on bottle - perfect for bulk case quantity or varied use applications
- 28/400 mm neck finish fits a variety of popular trigger sprayers



ITEM	DESCRIPTION	SIZE	CS QTY	MIN ORDER
5032H	Natural - 32 oz.	3 1/2" Dia. x 9 1/2" H	96/cs	1 cs



Contour® Graduated Bottle with Anti-Backoff

Patented "anti-back-off" locks the bottle to the trigger to prevent loosening.

- Embossed graduations and dilution ratios
- Note: "Anti backoff" lock may restrict filling with some dilution control systems
- 28/400 mm neck finish; locks with Contour® Triggers



ITEM	DESCRIPTION	SIZE	CS QTY	MIN ORDER
5024AB	Natural - 24 Oz.	3 1/2" Dia. x 7 7/8" H	96/cs	1 cs
5032AB	Natural - 32 Oz.	3 1/2" Dia. x 9 3/8" H	96/cs	1 cs

PET Bottle without Graduations

Transparent PET bottle allows for easy recognition of contents.

- Made of polyethylene terephthalate (PET)
- FDA compliant
- 28/400 mm neck finish fits a variety of popular trigger sprayers



ITEM	DESCRIPTION	SIZE	CS QTY	MIN ORDER
5032P	32 oz.	3 3/8" Dia. x 9 1/2" H	96/cs	1 cs



▲ 5032P

16 oz. Plastic Bottle with Graduations

Pairs with #7916 and #5816 triggers for a complete dispensing solution.

- Made of polyethylene with molded graduations
- FDA compliant
- 28/400 mm neck finish



ITEM	DESCRIPTION	SIZE	CS QTY	MIN ORDER
5016	Natural	2 3/4" Dia. x 7 3/8" H	150/cs	1 cs



▲ 5016

28MM Cap for Bottles

Bottle Cap

- 28/400 mm thread finish allows to pair well with bottles
- Fits 24 oz. and 32 oz. bottles
- Lined for a tight seal



ITEM	DESCRIPTION	SIZE	CS QTY	MIN ORDER
5024CP	White	28mm	1 ea	1 ea



▲ 5024CP

Flip Top Spout for Bottles

Pivot-spout allows a stream to target when open and seal when closed.

- Polypropylene construction with textured edge
- No leak design
- 28/400 mm thread finish allows it to pair well with many bottles; reshipper



ITEM	DESCRIPTION	SIZE	CS QTY	MIN ORDER
5024FS	Translucent	28mm	1700/cs	1 ea



▲ 5024FS



▲ 5024SS

Spray Alert® System

Set of 3 general purpose red/white sprayers and bottles, assembled.

- Bilingual check-list of contents imprinted on side of bottle
- Embossed graduation scales; thread finish; 1.5 ml output; reshipper
- Sealed in clear poly bag



ITEM	DESCRIPTION	SIZE	CS QTY	MIN ORDER
5024SS	24 oz. Spray Set	3 1/2"Dia. x 11"H x 4 1/2"W	3/pk; 32 pk/cs	1 cs
5032SS	32 oz. Spray Set	3 1/2"Dia. x 11"H x 4 1/2"W	3/pk; 24 pk/cs	1 cs



▲ 59037

Easy Pour Spout

Prevent spills and messy cleanup with this precision spout.

- Snap cap at the end of the spout
- Vent release
- 38/400mm thread finish fits most gallon jugs.



ITEM	DESCRIPTION	SIZE	CS QTY	MIN ORDER
59037	Translucent/White	7/16" spout x 38 mm cap x 3" L	6/cs	1 cs



▲ 1700

Flat Top Jug

Pair with #1300 or #1310, as well as many gallon pump dispensers.

- 4-liter / 1-gallon
- FDA compliant
- 38 mm neck finish; self-sealing cap available #1700CP
- Accessory Parts Available: 38mm cap - #7538



ITEM	DESCRIPTION	SIZE	CS QTY	MIN ORDER
1700	Natural	6 1/4" Dia. X 10 1/8" H	24/cs	1 cs



▲ 4806

General Purpose Trigger Sprayer

Sprayer has 1.4 ml output per stroke, 40-50% higher than other models.

- 3-finger grip reduces hand fatigue
- 2-piece piston design for better chemical resistance
- 28/400 mm neck finish; reshipper



ITEM	DESCRIPTION	SIZE	CS QTY	MIN ORDER
4800	White	8 1/4" Tube L	250/cs	1 cs
4802	Blue / White	8 1/4" Tube L	250/cs	1 cs
4806	Red / White	8 1/4" Tube L	250/cs	1 cs
4900	White	10" Tube L	250/cs	1 cs
4902	Blue / White	10" Tube L	250/cs	1 cs
4906	Red / White	10" Tube L	250/cs	1 cs

Value-Plus General Purpose Trigger Sprayer

These economy sprayers are durable and applicable to a variety of tasks.

- Ergonomic design, comfortable fit
- Textured 3-finger trigger creates a sure grip
- 28/400 mm neck finish; 1.0 ml output; NOT a reshipper
- Replacement Part Available: #6800T - 8 1/4" Tube Dip

ITEM	DESCRIPTION	SIZE	CS QTY	MIN ORDER
6800	White Sprayer	8 1/4" Tube L	250/cs	1 cs
6900	White Sprayer	10" Tube L	250/cs	1 cs
6900F	White Foaming Sprayer	10" Tube L	250/cs	1 cs



▲ 6800

360° General Purpose Trigger Sprayer

Trigger design and innovative two-way valve allows for a 360° angle spray.

- Ergonomic 3-finger grip
- Two-piece piston design for better chemical resistance
- 28/400 mm neck finish; 1.4 ml output per stroke; reshipper

ITEM	DESCRIPTION	SIZE	CS QTY	MIN ORDER
4360	Black	10" Tube	150/cs	1 cs



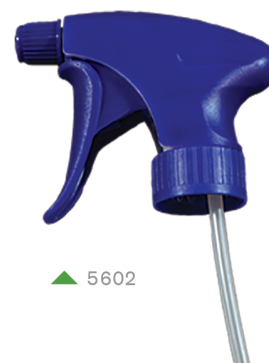
▲ 4360

Contour® Trigger Sprayer

Use these triggers with compatible bottles to create a customized system.

- Patented "anti backoff" system will not loosen when used with Contour® bottles
- Wide trigger and ergonomic shape for user comfort
- 28/400 mm neck; 1.3 ml output; reshipper

ITEM	DESCRIPTION	SIZE	CS QTY	MIN ORDER
5600	White	8 1/8" Tube L	250/cs	1 cs
5602	Blue	8 1/8" Tube L	250/cs	1 cs
5604	Orange	8 1/8" Tube L	250/cs	1 cs
5606	Red	8 1/8" Tube L	250/cs	1 cs
5607	Green	8 1/8" Tube L	250/cs	1 cs
5680	Gray - Chemical Resistant	8 1/8" Tube L	100/cs	1 cs
5681	Gray - Chemical Resistant	9 7/8" Tube L	100/cs	1 cs
5700	White	9 7/8" Tube L	250/cs	1 cs
5702	Blue	9 7/8" Tube L	250/cs	1 cs
5704	Orange	9 7/8" Tube L	250/cs	1 cs
5706	Red	9 7/8" Tube L	250/cs	1 cs
5707	Green	9 7/8" Tube L	250/cs	1 cs
5751	Foamer Sprayer - White	9 7/8" Tube L	100/cs	1 cs



▲ 5602



General Purpose Trigger Sprayer

Reliable sprayer with straight forward design, ensuring consistent function.

- Adjustable nozzle provides a variety of streams
- 5816 has a shorter tube, specifically designed to pair with bottle #5016
- 28/400 mm thread finish; 1.0 ml output; NOT a reshipper

ITEM	DESCRIPTION	SIZE	CS QTY	MIN ORDER
5800	White / White	8 1/8" Tube L	200/cs	1 cs
5802	Blue / White	8 1/8" Tube L	200/cs	1 cs
5806	Red / White	8 1/8" Tube L	200/cs	1 cs
5816	White / White	7 1/4" Tube L	200/cs	1 cs
5900	White / White	9 7/8" Tube L	200/cs	1 cs
5902	Blue / White	9 7/8" Tube L	200/cs	1 cs
5904	Green / White	9 7/8" Tube L	200/cs	1 cs
5906	Red / White	9 7/8" Tube L	200/cs	1 cs



Standard Trigger Sprayer

Having a wide range of uses, this sprayer is vital to many types of cleaning.

- Adjustable nozzle provides a variety of streams
- 7916 has a shorter tube, specifically designed to pair with bottle #5016
- 28/400 mm thread finish; 0.9 ml output; NOT a reshipper

ITEM	DESCRIPTION	SIZE	CS QTY	MIN ORDER
7800	White / White	8 1/8" Tube L	200/cs	1 cs
7802	Blue / White	8 1/8" Tube L	200/cs	1 cs
7806	Red / White	8 1/8" Tube L	200/cs	1 cs
7900	White / White	9 7/8" Tube L	200/cs	1 cs
7902	Blue / White	9 7/8" Tube L	200/cs	1 cs
7904	Green / White	9 7/8" Tube L	200/cs	1 cs
7906	Red / White	9 7/8" Tube L	200/cs	1 cs
7916	White / White	7 1/4" Tube L	200/cs	1 cs



Chemical Resistant Trigger Sprayer

The o-ring and 2-piece piston are chemical-resistant Viton® rubber.

- 40-50% higher output than standard triggers
- 28/400 mm neck finish; 1.4 ml output per stroke; reshipper
- long, comfortable ergonomic 3-finger grip

ITEM	DESCRIPTION	SIZE	CS QTY	MIN ORDER
4950	Gray	10" Tube L	100/cs	1 cs



Chemical Resistant Trigger Sprayer

This sprayer can handle a range of solutions and chemicals.

- Viton® rubber o-ring, made of PTMT plastic
- No-leak design
- 28/400 mm thread finish; 1.0 ml output; reshipper

ITEM	DESCRIPTION	SIZE	CS QTY	MIN ORDER
6008	Yellow / White	8 1/8" Tube L	200/cs	1 ea
6009	Yellow / White	9 7/8" Tube L	200/cs	1 ea

Chemical Resistant Trigger Sprayer

This sprayer resists deterioration and withstands most cleaning agents.

- Viton® rubber o-ring
- Sprayer made of chemical resistant polymers
- 28/400 mm thread finish; 1.5 ml output; NOT a reshipper

ITEM	DESCRIPTION	SIZE	CS QTY	MIN ORDER
6018	Yellow / White	8 ½" Tube L	200/cs	1 ea
6019	Yellow / White	9 ¾" Tube L	200/cs	1 ea



Deluxe High Output Trigger Sprayer

Designed to move a greater volume of liquid and reduce hand-fatigue.

- Longer trigger length increases leverage, creating a comfortable grip
- Sprays 2 to 2½ times more than other sprayers
- No leak design; 3.5 ml output; reshipper

ITEM	DESCRIPTION	SIZE	CS QTY	MIN ORDER
6109	Blue / White	9 ¾" Tube L	200/cs	1 ea



High Output Trigger Sprayer

Perfect for large cleaning jobs and chemical applications.

- 2-3 times more output than the standard sprayer
- Ergonomic trigger with touch pads and rear support
- 28/400 mm thread finish; 3.5 ml per stroke; NOT a reshipper

ITEM	DESCRIPTION	SIZE	CS QTY	MIN ORDER
6120	Blue / White	10" Tube L	50/cs	1 cs



Jumbo High-Output Trigger Sprayer

Over 3 times the normal output per stroke compared to other sprayers.

- Self venting to prevent bottle collapsing
- Remains primed between uses
- No leak design; 28/400 mm thread finish; 3.6 ml output; reshipper

ITEM	DESCRIPTION	SIZE	CS QTY	MIN ORDER
6149	Red / White	9 ¾" Tube L	100/cs	1 ea





House and Garden Trigger Sprayer

Great for liquid fertilizers and pest control applications.

- Universal cone adapter
- Extra-long tube allows a flexible reach
- 28/400 mm; thread finish; 1.5 ml output; NOT a reshipper

ITEM	DESCRIPTION	SIZE	CS QTY	MIN ORDER
4900HG	Green / White	36" Tube L	100/cs	1 ea



Sprayer / Foamer Combo Trigger Sprayer

Whether you need spray or foam, this convertible sprayer is up to the task.

- Sprays regularly when screen is flipped up
- Once screen is flipped down, rich foam is dispensed
- No leak design; 1.0 ml output; all plastic recyclable; reshipper
- 28mm/400 thread neck finish



ITEM	DESCRIPTION	SIZE	CS QTY	MIN ORDER
7029	White	10" Tube L	270/cs	1 ea



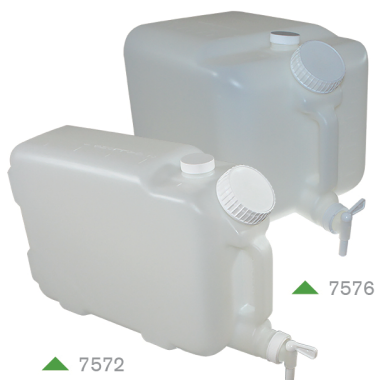
Deluxe Foamer Trigger Sprayer

Adjustable nozzle allows you to customize your foam consistency.

- Turns many liquid products into a thick foam for application
- 3-finger trigger reduces hand fatigue
- 28/400 mm thread finish; 1.0 ml output; NOT a reshipper



ITEM	DESCRIPTION	SIZE	CS QTY	MIN ORDER
7059	White	9 7/8" Tube L	100/cs	1 ea



E-Z Fill Container

Heavy-duty container with a 63mm angled-front opening for refilling.

- Includes #7577 faucet for dispensing and 38mm cap for top vent
- U.S. patented and FDA compliant; replacement parts apply to both units
- Embossed graduations on top and front; can be filled on the shelf
- Replacement Parts Available : #7538 - 38mm Top Vent Cap, #7576CN - 63 mm Cap w/o Hole



ITEM	DESCRIPTION	SIZE	CS QTY	MIN ORDER
7572	2 1/2 Gallon	16 " Lx 5" W x 10 " H	12/cs	1 ea
7576	5 Gallon	16 " L x 9 1/2 " W x 9 1/2 " H	6/cs	1 ea

Regular Container

Easily dispense ready-to-use chemicals or concentrates to smaller containers.

- Polyethylene construction with #7579 3/4" faucet included
- 100% latex-free and FDA compliant
- Molded graduations
- Replacement Parts Available: #7570C - 3" Faucet w/Hole, #7570CN - 3" Faucet Cap w/Hole, #7570P - 3/4" Plug for Cap, #7570V - Vent Steam Cap, #7579 - 3/4" Faucet



ITEM	DESCRIPTION	SIZE	CS QTY	MIN ORDER
7570	5 Gallon	13 1/2" L x 9 1/2" W x 9 1/2" H	6/cs	1 ea
7571	2 1/2 Gallon	7 1/2" L x 9 1/2" W x 9 1/2" H	12/cs	1 ea



▲ 7570

Faucet for E-Z Fill Containers

Swivel handle allows for easy access to stored contents.

- Fits #7576 and #7572 E-Z Fill containers
- Works well with #LBH18BFS Bag Filling Stations
- 38 mm neck finish



ITEM	DESCRIPTION	SIZE	CS QTY	MIN ORDER
7577	White	1 1/4" L x 1 5/8" W x 3" H	1100/cs	1 ea



▲ 7577

3/4" Faucet for Regular Containers

No-spill faucet with toggle handle for portioning.

- Fits 3/4" opening in #7570 and #7571 regular containers
- National pipe thread
- Can be used in other applications requiring 3/4" faucet.



ITEM	DESCRIPTION	SIZE	CS QTY	MIN ORDER
7579	White	3" L x 1 5/8" W x 3" H	650/cs	1 ea



▲ 7579

Stack Rack Storage & Dispensing Shelves

Space saving solution for your concentrates or ready-to-use chemicals.

- Only requires 14" x 14" of floor space; chemical resistant and extremely durable
- Shelves accommodate both 5 gal. & 2 1/2 gal. containers and Buddy Jugs
- Lip on back of shelves to prevent slipping
- Replacement Parts Available: #7580 - Post, #7580R - 7" Riser Post



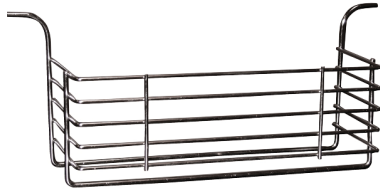
ITEM	DESCRIPTION	SIZE	CS QTY	MIN ORDER
7560	5-Shelf Stack Rack - Blue	14" L x 14" W x 53" H	1/cs	1 cs
7564	4-Shelf Stack Rack - Blue	14" L x 14" W x 40" H	1/cs	1 cs



▲ 7564



▲ 7560



▲ 7578

Wire Basket

Use your Stack Rack shelving unit for storing for bottles & sprayers.

- Attaches to Stack Rack - Can not be wall-mounted
- Chrome-plated wire basket
- Holds up to (3) 24-oz. or (3) 32-oz. bottles with sprayers or other supplies



ITEM	DESCRIPTION	SIZE	CS QTY	MIN ORDER
7578	Silver Powder- Coated	13 ½" W x 4" H x 4" D	100/cs	1 ea



▲ 3528

Portion Aid

Eliminate product waste and expedite portioning with this unique accessory.

- Use with cleaners, disinfectants, detergents or concentrates
- Ounce and cc calibrations molded-in on sides; both are 3 oz. cups
- To use, just squeeze bottle to desired amounts, then pour
- Eliminates extra cost of proportioning bottles



ITEM	DESCRIPTION	SIZE	CS QTY	MIN ORDER
3528	28 mm - Pint And Quart Bottles	3" H x 2" Dia. x 12" L	12/cs	1 cs
3538	38 mm - Gallon Bottles	3" H x 2" Dia. x 15" L	12/cs	1 cs



▲ 2402

Measuring Scoop

This basic scoop quickly measures small portions.

- 2 oz. capacity
- Perfect for precise repetitive measuring
- Great for use in laundry applications or cleaning



ITEM	DESCRIPTION	SIZE	CS QTY	MIN ORDER
2402	Translucent	1 ½" H x 1 ½" W	500/cs	1 ea



▲ 2405

Deluxe Measuring Scoop

Great for distributing ice melt or floor sweeping compounds.

- 2 qt. capacity
- Made of polypropylene



ITEM	DESCRIPTION	SIZE	CS QTY	MIN ORDER
2405	White	9 ¼" L x 6" W x 5" H	12/cs	1 cs

16 oz. Measuring Cup

Precisely measure your chemicals prior to diluting with this measuring cup.

- Made of translucent polypropylene
- Liquid and dry measurements with embossed graduations



ITEM	DESCRIPTION	SIZE	CS QTY	MIN ORDER
2416	Translucent	4" Dia. x 4 1/2" H	24/cs	1 ea



▲ 2416

8 oz. Measuring Cup

Portion concentrates with this measuring cup.

- Made of translucent polypropylene
- Embossed graduations, ounce and milliliter scales



ITEM	DESCRIPTION	SIZE	CS QTY	MIN ORDER
2418	Translucent	2 1/2" D x 5" W x 3" H	450/cs	1 ea



▲ 2418

3 Qt. Color Coded Square Utility Pails

This new 3 quart color coded pail is perfect for your smaller cleaning jobs.

- High density polypropylene with metal handle
- Reduces risk of cross-contamination; meets HACCP dedicated use guidelines
- Red used for sanitizing; green used for cleaning

ITEM	DESCRIPTION	SIZE	CS QTY	MIN ORDER
5503-6S	Red - 3 Qt. "Sanitizing"	6" H x 6 3/4" W x 6 3/4" D	12/cs	1 cs
5503-14C	Green - 3 Qt. "Cleaning"	6" H x 6 3/4" W x 6 3/4" D	12/cs	1 cs



▲ 5503-6S

▲ 5503-14C

6 Qt. Color Coded Square Utility Pails

These pails fit into a color coded structure for cleaning and sanitizing.

- High density polypropylene with metal handle
- Reduces risk of cross-contamination; meets HACCP dedicated use guidelines
- Red used for sanitizing; green used for cleaning



ITEM	DESCRIPTION	SIZE	CS QTY	MIN ORDER
5506-6S	Red - 6 Qt. "Sanitizing"	7 1/2" H x 9" W x 7" D	12/cs	1 cs
5506-14C	Green - 6 Qt. "Cleaning"	7 1/2" H x 9" W x 7" D	12/cs	1 cs



▲ 5506-6S

▲ 5506-14C



▲ 5506

Utility Pail 6 Qt.

Simplify a wide range of general-purpose cleaning tasks with this utility pail.

- High density polypropylene with metal handle
- Translucent pail with embossed graduations for easy measurement
- Fits conveniently on a janitor's cart



ITEM	DESCRIPTION	SIZE	CS QTY	MIN ORDER
5506	Translucent	7 ½" H x 9" W x 7" D	48/cs	1 ea



▲ 5510R

▲ 5514

Deluxe Heavy Duty Bucket

Buckets are made of high density polypropylene and are USDA-Approved.

- Resistant to acids, alkalis, chemicals, and cleaning compounds
- Molded spout for targeted pouring
- Embossed graduations for perfect measuring; quarts and liters



ITEM	DESCRIPTION	SIZE	CS QTY	MIN ORDER
5510	Gray - 10 Qt.	10 5/8" Dia. x 10 ¼" H	12/cs	1 cs
5510R	Red - 10 Qt.	10 5/8" Dia. x 10 ¼" H	12/cs	1 cs
5510RS	Red - 10 Qt. "Sanitizer" Imprint	10 5/8" Dia. x 10 ¼" H	12/cs	1 cs
5510W	White - 10 Qt.	10 5/8" Dia. x 10 ¼" H	12/cs	1 cs
5514	Gray - 14 Qt.	12 3/16" Dia. x 11 ¼" H	6/cs	1 cs



▲ 5502

Value-Plus Bucket - 10 Qt.

This economy bucket has a grooved bottom and many other features.

- Pour spout reduces spillage during transfer
- Steel handle for carrying heavy loads
- Embossed graduation for perfect measuring



ITEM	DESCRIPTION	SIZE	CS QTY	MIN ORDER
5502	Gray	10 5/8" Dia. x 10 ¼" H	12/cs	1 cs



▲ 410

Galvanized Utility Pails

These galvanized pails resist the elements and will not oxidize.

- Mill-galvanized 24 gauge steel
- Seams reinforced with sealant
- Heavy corrugations add side strength
- Embossed graduations and ¼" steel rod rim reinforcement



ITEM	DESCRIPTION	SIZE	CS QTY	MIN ORDER
410	10 - Qt. Pail	8 ½" H x 10 5/8" Top Dia. x 8 5/8" Bot. Dia.	6/cs	1 cs
414	14 - Qt. Pail	11 1/8" H x 11 3/4" Top Dia. x 9 5/8" Bot. Dia.	6/cs	1 cs

5 Gallon Pail with Lid

These pails and coordinating lids are both FDA and UN-approved.

- Durable high density polyethylene
- Lid features a Senior Rieke FLEXSPOUT®
- Steel handle with ergonomic plastic grip
- "Painters Pail" with Baby hazard label on the side
- Accessory Available: #904AD - Jr. Rieke Adapter



ITEM	DESCRIPTION	SIZE	CS QTY	MIN ORDER
5515	White	11 1/4" Dia. x 14 1/2" H	120/pallet	1 ea



▲ 5515

Drum Wrench

This durable aluminum drum wrench quickly removes drum bungs.

- Universally used for plastic or metal drum bungs
- Lightweight, yet durable non-sparking aluminum construction
- Aluminum construction permits use with hazardous materials



ITEM	DESCRIPTION	SIZE	CS QTY	MIN ORDER
7200	Silver	10 1/2" L x 5 1/4" W x 2 3/4" H	12/cs	1 ea



▲ 7200

Plastic Pail Lid Opener

Remove lids from plastic pails and buckets without straining.

- Works quickly by applying leverage
- Will not cut or distort container
- Ideal for removing foodservice container lids



ITEM	DESCRIPTION	SIZE	CS QTY	MIN ORDER
7210	White	8" x 2 3/4" x 1 1/4"	12/cs	1 ea



▲ 7210

Jr. Pump-Up Sprayer and Foamer

Portable, hand held pump up sprayer for multi-purpose jobs.

- Increased chemical resistance with Viton seals
- Ergonomic thumb lock facilitates spraying
- Metal plunger allows for increased durability
- Replacement Parts Available: #7548K -Kit Repair, #7548LN - Lance, #7548N - Nozzle Spray, #7548OR - O-Ring, #7549F - Nozzle Foam/over



ITEM	DESCRIPTION	SIZE	CS QTY	MIN ORDER
7548	Gray / Translucent - 48 Oz. - Sprayer	21 1/2" L x 8" W	6/cs	1 ea
7549	Gray / Translucent - 48 Oz. - Foamer	21 1/2" L x 8" W	6/cs	1 ea



▲ 7548

▲ 7549



▲ 6500

Pump-up Sprayer/Foamer

Pumps are made of high density polypropylene and are USDA-Approved.

- 2 liter (64 ounce) tank capacity
- Ergonomic "thumb-lock" facilitates fatigue-free spraying
- 70 PSI output at full compression
- Includes optional foaming nozzle



ITEM	DESCRIPTION	SIZE	CS QTY	MIN ORDER
6500	Pump Up Sprayer / Foamer	7" Dia. X 13" H	6/cs	1 ea



▲ 7504

Foam Gun

Increase the cleaning agent's surface contact time with this foam gun.

- Sprays approx. 4-6 feet; color coded metering tips for dilution selection
- Water pressure operated hose-end foam gun; Minimum PSI 40, maximum PSI 85
- Powerful spray rinse when detaching bottle and foamer from handle



ITEM	DESCRIPTION	SIZE	CS QTY	MIN ORDER
7504	Black / Translucent	11" L x 4 1/2" W x 15" H	1/cs	1 cs



▲ 7507

Foam Gun 32 Oz.

Minimize scrubbing required by using this hose-mounted foam gun.

- Water pressure operated hose-end foam gun; Minimum PSI 40, maximum PSI 60
- Great when foam is desired to increase surface contact time
- 4 oz. per gallon dilution pre-set; tank holds 32 oz. of concentrate
- Translucent tank for easy view of product level



ITEM	DESCRIPTION	SIZE	CS QTY	MIN ORDER
7507	Orange / Translucent	11" L x 4 1/2" W x 15" H	6/cs	1 ea



▲ 7512

All-Purpose Tank Sprayer

Suitable for applying mild chemical solutions.

- Wide opening for easy filling and a vertical holder for spray wand
- Locking handle and twist-to-pump operation
- Viton seals and 30" premium PVC hose; #7513 includes carry strap
- 2 Gal. 12" and 3 Gal. 16" polymer extension
- Replacement Parts Available: #7512N - Nozzle, #7512W - Wand, #7518W - Wand, #7522PA - Assembly Plunger



ITEM	DESCRIPTION	SIZE	CS QTY	MIN ORDER
7512	2-Gallon Sprayer	8" L x 8" W x 20" H	1/cs	1 cs
7513	3-Gallon Sprayer With Carry Strap	8" L x 8" W x 24" H	1/cs	1 cs

Chemical Resistant Tank Sprayer

This tank sprayer offers maximum chemical resistance for non-acids.

- 12" brass wand, Viton seals and a 30" premium PVC hose
- Full brass shut-off valve and extension wand
- Twist-to-pump operation and a locking handle
- Replacement Part Available: #7522D - Assembly Discharge



ITEM	DESCRIPTION	SIZE	CS QTY	MIN ORDER
7522	2-Gallon Tank Sprayer	8" L x 8" W x 22" H	1/cs	1 cs



1 oz. Deluxe Plastic Dispensing Pump

Perfect for a variety of applications, from foodservice to dispensing chemicals.

- Calibrated plunger; fits standard gallon; FDA compliant
- Can be used with grit and pumice substances
- 38 mm cap; External restriction clip; #904-25 - 1/4 oz, #904-50 - 1/2 oz
- FDA compliant for food applications and disinfectants



ITEM	DESCRIPTION	SIZE	CS QTY	MIN ORDER
901	White	10 3/4" Tube L	24/cs	1 cs



1 oz Deluxe Plastic Pail Pump

Commonly used with soaps, cleaners, degreasers & chemical concentrates.

- Calibrated plunger
- Fits 5-gallon pails with Senior Rieke adapter
- 16" tube length from collar to end



ITEM	DESCRIPTION	SIZE	CS QTY	MIN ORDER
901A	White	16" Tube L	24/cs	1 cs



Plastic Dispensing Pump

Locking top and optional accessories make this pump highly adaptable.

- Can be used with grit and pumice substances
- External restriction clips available - #904-25: 1/4 oz, #904-50: 1/2 oz.
- 38 mm cap fits standard gallon; FDA compliant
- Internal restriction clips available
- Replacement Parts Available: #910 - Plastic Lid, #904-10 - 1oz. Pump



ITEM	DESCRIPTION	SIZE	CS QTY	MIN ORDER
904	White	11" Tube L	24/cs	1 cs





▲ 904A

Plastic Pail Pump

These simple dispensing pumps fit on 5 gallon pails for reliable portioning.

- Removable cap without calibrated plunger
- Fits 5-gallon pails with Senior Rieke adapter
- Can be used with grit and pumice substances; FDA Compliant



ITEM	DESCRIPTION	SIZE	CS QTY	MIN ORDER
904A	White	17" Tube L	24/cs	1 cs



▲ 905

1 oz. Plastic Pump Kit

Kit includes 1 pump and several cap sizes to allow for multiple applications.

- Includes plastic cap sizes 89 mm, 110 mm, 120 mm, and #904 econo dispensing pump
- Use with various neck sizes on different gallon containers
- FDA and USDA compliant for food applications



ITEM	DESCRIPTION	SIZE	CS QTY	MIN ORDER
905	White	10 3/4" Tube L	24/cs	1 ea



▲ 902A

Special 1/8 oz. Plastic Pump

Ideal for precise dispensing in small amounts including fractions of an ounce.

- Great for hand soaps and chemicals
- Fits standard gallon #1700
- 38 mm cap

ITEM	DESCRIPTION	SIZE	CS QTY	MIN ORDER
902A	White	11" Tube L	24/cs	1 cs



▲ 906A

Special 1/16 oz. Plastic Pump

Useful for liquids that need dispensed in very small amounts.

- Fits standard quart and pint bottles
- 28 mm cap
- Perfect for countertop dispensing

ITEM	DESCRIPTION	SIZE	CS QTY	MIN ORDER
906A	White	9" Tube L	24/cs	1 cs

8 oz. Drum Pump

These chemical dispensing pumps fit 5 through 55 gallon containers.

- Adapts to both ¾" and 2" National Pipe Thread, Senior Rieke FlexSpout included
- Polypropylene and polyethylene construction for chemical resistance
- Pumps 2, 4, 6, or 8-oz. with included restriction clips



ITEM	DESCRIPTION	SIZE	CS QTY	MIN ORDER
2200	Blue	2" Dia. x 11" L	12/cs	1 ea
2202	Gray	2" Dia.x 11" L	12/cs	1 ea



▲ 2200

Siphon Drum Pump

Designed to easily drain low-viscosity contents from large drums.

- Made from polyethylene; FDA compliant
- Siphons 3.6-gal. per minute
- Fits 15, 30, & 55-gallon drum with 2" National Pipe Thread

ITEM	DESCRIPTION	SIZE	CS QTY	MIN ORDER
2300	Red / White	3" Dia. x 45" L	24/cs	1 cs



▲ 2300

Mini Siphon Pump

For small jobs, this siphon pump is ideal.

- Includes adapter for use with Rieke Intermediate plastic FlexSpout on 5-gal. pails
- When used with Rieke Jr. FlexSpout, remove adapter
- FDA compliant

ITEM	DESCRIPTION	SIZE	CS QTY	MIN ORDER
2305	Red / White	3 ½" Dia.x 21" L	24/cs	1 ea



▲ 2305

Heavy-Duty Siphon Pump

This pump quickly moves high-viscosity fluids

- High-density polyethylene; FDA compliant
- Siphons 7-gal. per minute
- Fits 15, 30, & 55-gallon drum with 2" National Pipe Thread

ITEM	DESCRIPTION	SIZE	CS QTY	MIN ORDER
2307	Red / White	3 ½" Dia. x 47" L	24/cs	1 ea



▲ 2307



▲ 2204

22 oz. Metal Drum Pump

Ideal for portioning large amounts of fluid from bulk containers.

- Chrome-plated steel construction
- Pumps 22-oz. per stroke; self-priming
- Fits 15, 30, & 55-gallon drum with 2" National Pipe Thread

ITEM	DESCRIPTION	SIZE	CS QTY	MIN ORDER
2204	Chrome-Plated Steel	1 1/2" Dia. x 42 1/2" L x 8" W	12/cs	1 ea



▲ 2208

8 oz. Metal Drum Pump

Transfer concentrates and chemicals with this drum pump.

- Chrome-plated steel construction
- Pumps 8-oz. per stroke
- Fits 15, 30, & 55-gallon drum with 2" National Pipe Thread

ITEM	DESCRIPTION	SIZE	CS QTY	MIN ORDER
2208	Chrome-Plated Steel	1 1/8" Dia. x 24"L x 9" W	12/cs	1 ea



▲ 4205

Drum Spigot

Dispensing with these spigots gives you instant on/off control.

- Made of virgin polyethylene; FDA approved
- Handles viscous materials, not affected by most acids, caustics or oil
- WARNING: Do not use in temperatures exceeding 125 degrees Fahrenheit



ITEM	DESCRIPTION	SIZE	CS QTY	MIN ORDER
4200	2" Drum Spigot	Fits 2" National Pipe Thread	24/cs	1 cs
4205	3/4" Drum Spigot	Fits 3/4" National Pipe Thread	24/cs	1 cs



▲ 7649

Heavy-Duty Insulated Nozzle

Pairs perfectly with the #7650 hose for general cleaning needs.

- Solid brass nozzle with built-in rubber guard
- Adjustable valve components; works with #7504
- Will work with hot water up to 180°F and 125 PSI



ITEM	DESCRIPTION	SIZE	CS QTY	MIN ORDER
7649	Gray	5 1/2" x 1 5/8" x 6"	24/cs	1 ea

Heavy-Duty Industrial Rubber Hose

Usable up to 125 PSI and 180° F.

- Machine brass couplings ensure a tight seal to fittings and attachments
- 500 lb. maximum burst strength
- Kink-resistant; 50 foot length

ITEM	DESCRIPTION	SIZE	CS QTY	MIN ORDER
7650	Black	¾" Inner Dia. x .50' L	1/cs	1 cs



▲ 7650

3706 E-Z Grabber

A durable solution featuring an aluminum shaft and pistol grip.

- Rubber grips can grab objects up to 4½" wide
- Strong shaft supports up to 2 pounds
- Eliminates bending to pick up litter
- Replacement Parts Available: #3706G - Grips

ITEM	DESCRIPTION	SIZE	CS QTY	MIN ORDER
3706	Silver	36" L x 3 ½" W x 3" H	6/cs	1 ea



▲ 3706

36" Grabber

Use this grabber to extend your reach and pick up objects of all sizes.

- Metal shaft with plastic grippers and handles
- Ideal for picking up bottles and garbage outdoors
- Powerful claws grip small and odd shaped objects

ITEM	DESCRIPTION	SIZE	CS QTY	MIN ORDER
6210	Silver / Black	36" x 3 ½" x 3"	6/cs	1 cs



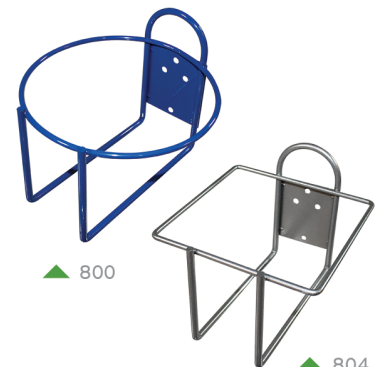
▲ 6210

Wall Brackets

Wall mounted sturdy brackets create a storage solution for chemicals.

- Constructed of rigid ¼" wire
- Coated blue epoxy or silver powder-coated
- Excellent for holding gallon containers

ITEM	DESCRIPTION	SIZE	CS QTY	MIN ORDER
800	Blue - Round - Epoxy	6 ¾" Dia. x 4 ¼" H	12/cs	1 cs
801	Silver - Round - Powder Coated	6 ¾" Dia. x 4 ¼" H	12/cs	1 cs
802	Blue - Rectangular - Epoxy	7 ½" W x 5" D x 4 ¾" H	12/cs	1 cs
804	Silver Square - Powder Coated	6 ¾" W x 6 ¾" D x 6" H	12/cs	1 cs



▲ 800

▲ 804



▲ 6222

Stainless Steel Window Squeegee

This rugged squeegee can be paired with a handle for large jobs.

- Fast-lock handle for quick blade and channel changes
- Non-slip rubber grip
- Can extend reach with standard squeegee handles
- Handles #8101, #760, #6248 or #221-W



ITEM	DESCRIPTION	SIZE	CS QTY	MIN ORDER
6222	12" Stainless Steel Squeegee	12"L x 5 1/4"W x 1"H	6/cs	1 cs
6222R	12" Replacement Rubber Squeegee	12" L x 1" H	6/bg	1 bg
6228	18" Stainless Steel Squeegee	18"L x 5 1/4"W x 1"H	6/cs	1 cs
6228R	18" Replacement Rubber Squeegee	18" L x 1" H	6/bg	1 bg



▲ 6240

Combo Squeegee/Washer

Washer and squeegee in one unit reduces transition time

- Soft rubber blade; able to be mounted to standard squeegee handle and acme thread
- Washer features water retention wells for fewer reloads
- Lightweight aluminum construction prevents user fatigue



ITEM	DESCRIPTION	SIZE	CS QTY	MIN ORDER
6240	Black / White	10"L x 7"W x 4"H	6/cs	1 cs



▲ 6214S

Window Strip Washer Sleeve

Plush, washable white fabric is tough enough for big jobs.

- Velcro closure guarantees a tight fit
- Reinforced zigzag stitched ends ensure a long life
- Patented water wells for high water retention

ITEM	DESCRIPTION	SIZE	CS QTY	MIN ORDER
6214S	14" Replacement Sleeve	14" L	6/cs	1 cs
6218S	18" Replacement Sleeve	18" L	6/cs	1 cs



▲ 6112

Household Window Squeegee

This squeegee is perfect for light/medium work.

- Can be paired with a standard squeegee handle (#8101, #760, #6248 or #221-W)
- Aluminum channel is lightweight and rigid with a durable plastic handle
- Soft rubber blade is perfect for glass or any smooth surface



ITEM	DESCRIPTION	SIZE	CS QTY	MIN ORDER
6112	Black / Silver	12" L x 6 1/2" W x 1" H	6/cs	1 cs

Window Washing Bucket

Perfect for strip washers and squeegees, comfortably fits an 18" tool.

- Heavy-duty handle with ergonomic grip
- High density polyethylene bucket
- 6-gallon capacity; marked with liter and gallon increments.



ITEM	DESCRIPTION	SIZE	CS QTY	MIN ORDER
6250	Blue / Black	22" L x 10" W x 11 ¾" H	3/cs	1 cs



▲ 6250

Window Cleaner / Sponge Squeegee

Economy option squeegee tool for cleaning glass.

- Nylon net covered sponge; improves life of sponge and scrubbing power for tough residue
- 8" soft rubber squeegee on opposite side
- Each head unit packed with 20" polypropylene handle



ITEM	DESCRIPTION	SIZE	CS QTY	MIN ORDER
7458	Black / Yellow	21 ½" L x 8" W	24/cs	1 ea



▲ 7458

Aluminum Extension Pole

Made from anodized extruded aluminum, this pole is strong and lightweight.

- Extendable from 4 ft. to 8 ft. to reach high locations without a ladder
- Compatible with taper or Acme-threaded tools
- Poles lock and loosen in a 1/2" turn of the locking collar



ITEM	DESCRIPTION	SIZE	CS QTY	MIN ORDER
6248	Black / Silver	50" – 96"	3/cs	1 cs



▲ 6248

Amazing Sponge and Amazing Sponge Jr.

Eliminate stains and marks with only water using this innovative cleaning solution.

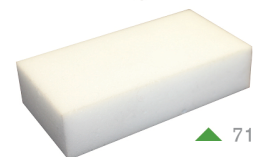
- Most effective on hard, smooth surfaces; melamine construction
- Yellow gripping middle-layer prolongs use and improves cleaning performance
- 7151 has 40-50% more surface area, lasts longer, and has special ergonomic shape
- Melamine cleaning surface on both sides



ITEM	DESCRIPTION	SIZE	CS QTY	MIN ORDER
7150	Amazing Sponge	4 ½"L x 2 ¾"W x 1 ½"H	30/cs	1 cs
7151	Super Amazing Sponge	6 ¼"L x 4 ¼"W x 1 ⅝"H	12/cs	1 cs
7156	Amazing Sponge Jr.	4 ¾" L x 2 ½ W x 1 3/25" H	24/cs	1 cs



▲ 7150



▲ 7156



▲ 7170P

Cellulose Sponge

These sponges absorb up to 20 times their weight in liquid.

- Individually damp-packed
- Washable
- Biodegradable



ITEM	DESCRIPTION	SIZE	CS QTY	MIN ORDER
7160P	Small Sponge	6 1/4" L x 3 3/8" W x 1" H	6/pk; 8 pk/cs	1 pk
7170P	Medium Sponge	6 1/4" L x 4 1/8" W x 1 5/8" H	6/pk; 4 pk/cs	1 pk
7180P	Large Sponge	7 9/16" L x 4 3/16" W x 1 11/16" H	6/pk; 4 pk/cs	1 pk



▲ 7100

Chemically Treated Sponge

This sponge is ideal for soot removal on delicate surfaces.

- Dry cleaning sponge; no water necessary; trim soiled areas for continued use
- Gentle enough to use on difficult surfaces like wallpaper, woodwork, and painted walls
- An eco-friendly option able to clean without chemicals or solvents



ITEM	DESCRIPTION	SIZE	CS QTY	MIN ORDER
7100	Beige	6 1/4" L x 3 W" x 2" H	36/cs	1 ea



▲ 7155

Shown Compressed

Compressed Sponge

These general purpose cellulose sponges can be used for a variety of jobs.

- Made of quality cellulose; compressed for packing and shipping
- Can be used with chemicals
- Expands when exposed to liquid; excellent promotional item



ITEM	DESCRIPTION	SIZE	CS QTY	MIN ORDER
7155	Yellow	5 1/2" L x 3 1/4" W x 1 1/4" H (Expanded)	640/cs	1 ea



▲ 7129P



▲ 7130P

Cellulose Scrubber Sponge

These cellulose scrubber sponges pair soft cellulose with a scouring pad.

- Light-duty cellulose sponge has a white scrub/scouring pad
- General-duty cellulose sponge has a green scrub/scouring pad
- Damp-packed in poly bag; washable



ITEM	DESCRIPTION	SIZE	CS QTY	MIN ORDER
7129P	Light Duty	6 1/4"L x 3 3/16" W x 7/8" H	5/pk; 8 pks./cs	1 pk
7130P	General Duty	6 1/4"L x 3 3/16" W x 7/8" H	5/pk; 8 pks./cs	1 pk

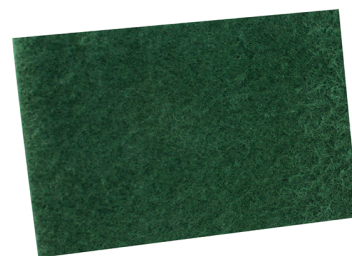
General Purpose Scouring Pad

This extra-large scouring pad removes stubborn grime from any surface.

- Ideal for equipment and metal surfaces
- Great for quick cleanup of tough messes
- FDA compliant for cleaning foodservice equipment



ITEM	DESCRIPTION	SIZE	CS QTY	MIN ORDER
7135B	Green	9" L x 6" W	10/bg; 6 bgs./cs	1 bg



▲ 7135B

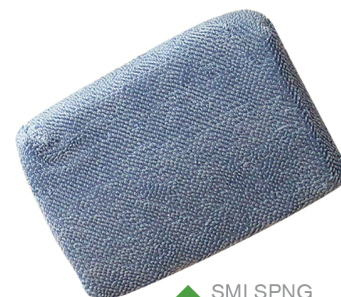
Microfiber Sponge

The absorption of microfiber with abrasive mesh gives you 2 ways to clean.

- Convenient size and shape
- Covered with Microfiber on top and sides, backing is covered with mesh scrubber
- Excellent absorption with deep soil extraction



ITEM	DESCRIPTION	SIZE	CS QTY	MIN ORDER
SMLSPNG	Blue / White	3 1/2" x 5" x 1"	12/cs	1 cs



▲ SMLSPNG

Floor Pad Holders

Swivel bases are great for scrubbing hard-to-reach areas and deep cleaning.

- Built-in teeth on either base accepts 4-1/2" x 10" cleaning pads
- Accepts any 15/16" diameter tapered (#2007) or acme-threaded handle (#2000)



ITEM	DESCRIPTION	SIZE	CS QTY	MIN ORDER
2000	Acme Threaded Socket Pad Holder	3 5/8" W x 9 1/2" L	12/cs	1 cs
2001WP	Acme Threaded Socket Holder w/Pads	3 5/8" W x 9 1/2" L	1/cs	1 ea
2007	Universal Locking Collar Pad Holder	3 5/8" W x 9 1/2" L	12/cs	1 cs
2007WP	Universal Locking Collar Holder w/Pads	3 5/8" W x 9 1/2" L	1/cs	1 ea



▲ 2001WP



▲ 2005



▲ 2000

Hand Scrubber with Pads

Apply maximum pressure to tough stains with this hand scrubber.

- Built-in teeth on base accepts 4-1/2" x 10" cleaning pads
- Accepts a 15/16" diameter tapered or threaded handle



ITEM	DESCRIPTION	SIZE	CS QTY	MIN ORDER
2006	Hand Scrubber	3 3/4" W x 9 1/4" L	6/cs	1 ea
2006WP	Hand Scrubber with Pads	3 3/4" W x 9 1/4" L	1/cs	1 ea
2007WP	Universal Locking Collar Holder w/Pads	3 5/8" W x 9 1/2" L	1/cs	1 ea



▲ 2006WP

Utility Pads for Hand Held and Floor Holders

A variety of utility pads for all your small cleaning areas.

- Different pad weights for buffing, stripping and scrubbing
- Fits floor holders #2000, #2007 and hand holder #2006
- #2005 is natural cotton, pre-laundered and washable; for dry or wet mopping small areas
- 1 brown stripping pad and 1 white polishing pad included with 2006WP



▲ 95410 • 95210 • 95110 • 95310

ITEM	DESCRIPTION	SIZE	CS QTY	MIN ORDER
95110	Light Duty- White Pad	4½" W x 10" L	5/pk; 4 pk/cs	1 cs
2002PW	White Polishing Pad	4 ½" W x 10" L	250/cs	1 ea
95210	Medium Duty - Blue	4½" W x 10" L	5/pk; 4 pk/cs	1 cs
95310	Heavy Duty - Brown	4½" W x 10" L	5/pk; 4 pk/cs	1 cs
2002PB	Brown Stripping Pad	4 ½" W x 10" L	250/cs	1 ea
95410	Heavy Duty - Black	4½" W x 10" L	5/pk; 4 pk/cs	1 cs
2005	Natural Wall Washer Pad	5" W x 10" L	12/cs	1 cs

Enduro Cloth

Replace up to 15 rolls of paper towels; 100% biodegradable.

- Closed pores won't harbor bacteria
- Machine washable and dishwasher safe
- This cloth is a reusable, lint-free, highly absorbent material



▲ 10100, 10200, 10300, 10400

ITEM	DESCRIPTION	SIZE	CS QTY	MIN ORDER
10100	Small - Red	9 ¾" L x 8" W	5/pk: 12 pk/cs	1 pk
10200	Small - Blue	9 ¾" L x 8" W	5/pk: 12 pk/cs	1 pk
10300	Small - Yellow	9 ¾" L x 8" W	5/pk: 12 pk/cs	1 pk
10400	Small - Green	9 ¾" L x 8" W	5/pk: 12 pk/cs	1 pk
20100	Large - Red	12" L x 10 ½" W	5/pk: 12 pk/cs	1 pk
20200	Large - Blue	12" L x 10 ½" W	5/pk: 12 pk/cs	1 pk
20300	Large - Yellow	12" L x 10 ½" W	5/pk: 12 pk/cs	1 pk
20400	Large - Green	12" L x 10 ½" W	5/pk: 12 pk/cs	1 pk

Lambswool Dusters

100% Lambswool dusters prevent streaks and scratches.

- Ideal for cleaning high or difficult places like corners and ceiling fans
- Attracts dust like a magnet to the washable fibers; head does not bend
- White handles with an assortment of different color heads



▲ 3100

ITEM	DESCRIPTION	SIZE	CS QTY	MIN ORDER
3100	Medium - 24"	11" HEAD L	12/cs	1 cs
3103	Long - 28"	11" HEAD L	12/cs	1 cs
3105	Telescopic - 30-45"	12"HEAD L	12/cs	1 cs
3106	Extended Twist-And-Lock - 33-60"	11" HEAD L	12/cs	1 cs
3107	Duster - 20"	3 ½" HEAD L	12/cs	1 cs

Microfiber Dusters

Hand, extendable, and convertible dusters for any cleaning job.

- Split microfiber strands grab and hold dirt and dust better than traditional dusters
- Extendable duster has a twist-and-lock fitting on the handle
- Convertible duster can be hand held or attached to an Acme thread handle
- Safe to use on delicate items, will not scratch, head does not bend



▲ 3147



▲ 3149

ITEM	DESCRIPTION	SIZE	CS QTY	MIN ORDER
3147	Green / White - Hand Duster	16"	12/cs	1 cs
3148	Green / White - Extendable Duster	33" - 45"	12/cs	1 cs
3149	Black / White - Convertible Duster	20"	12/cs	1cs

Microfiber High Duster

This multi-use tool is designed to clean awkward or hard-to-reach areas.

- Stainless steel sword embedded in heavy canvas can be bent into almost any shape
- For high dusting, pair with a extendable handle #LFSO100 or a fixed handle #CHO246
- Dusters come in cut end microfiber or chenille with soft dust grabbing fingers
- Adjustable nut at handle for different angle cleaning



ITEM	DESCRIPTION	SIZE	CS QTY	MIN ORDER
HDCOMP	Blue - Complete Microfiber Duster	29"	1/cs	1 cs
HDCOVR	Blue - Microfiber Duster Cover	21 ½"	12/bg	1 bg
HDFRM	Gray / Blue - High Duster Frame Only	29"	12/cs	1 cs
LHDC	Green - Complete Chenille Duster	29"	1/cs	1 cs
LHDCVR	Green- Chenille Duster Cover	21 ½"	12/bg	1 bg



Economy Ostrich Feather Duster

100% ostrich feather dusters are perfect for delicate cleaning.

- Great for dusting irregular surfaces
- Feathers are a natural product; feather length and color may vary
- Varnished wood handle

ITEM	DESCRIPTION	SIZE	CS QTY	MIN ORDER
4600	Brown / Gray	12" L	12/cs	1 cs
4601	Brown / Gray	14" L	12/cs	1 cs
4603	Brown / Gray	23" L	12/cs	1 cs
4604	Brown / Gray	34" L	12/cs	1 cs



Economy Ostrich Retractable Feather Duster

100% ostrich feather dusters are perfect for delicate cleaning.

- Great for dusting irregular surfaces
- Feathers are a natural product; feather length and color may vary
- Retractable plastic handle

ITEM	DESCRIPTION	SIZE	CS QTY	MIN ORDER
4605	Brown / Gray	8 ½" - 15" L	12/cs	1 cs



Premium African Ostrich Feather Duster

These dusters have more fibers per feather to hold dust.

- Safe for more delicate areas (trophies, china, fragile collectibles)
- 100% mature gray or black Drab African ostrich feathers
- Handle color may vary from light natural to darker, varnished wood

ITEM	DESCRIPTION	SIZE	CS QTY	MIN ORDER
4630	Gray / Black	20" L	12/cs	1 cs





▲ 3110

Polywool Dusters

Polywool fibers create an electrostatic charge to better attract and hold dust.

- All polywool dusters are non-allergenic, fully washable
- Items #3110 and #3120 have metal handles with a white plastic coating and flexible heads
- Item #3125W has a metal handle with black plastic coating

ITEM	DESCRIPTION	SIZE	CS QTY	MIN ORDER
3110	Duster - 23"	13 ½" HEAD L	12/cs	1 cs
3120	Extendable Duster - 52"-84"	13 ½" HEAD L	12/cs	1 cs
3125W	Extendable Duster - 52"-84"	13 ½" HEAD L	12/cs	1 cs



▲ LFRMIT

Microfiber Mitt

The split fibers in this mitt create a charge that holds dust and dirt.

- Excellent for surface dusting and cleaning of large areas
- Can be laundered; ambidexterous
- Knit cuff holds the mitt on the hand during cleaning



ITEM	DESCRIPTION	SIZE	CS QTY	MIN ORDER
LFRMIT	Blue	5" W x 10" H	180/mstr.	1 ea



▲ LFK100

Microfiber Suede Cloth

This cloth is specifically designed for cleaning glass and shiny surfaces.

- Also safe for use on other surfaces for dusting or general cleaning
- Can be laundered repeatedly without degradation of material
- 4-sided surge-finished edge



ITEM	DESCRIPTION	SIZE	CS QTY	MIN ORDER
LFK100	Blue	16" L x 16" W	12/bg; 18 bgs./cs	1 bg



Premium Weight Microfiber Cloths

Microfiber cloths are a great choice for general cleaning and dusting.

- Excellent cleaning for surfaces like counter tops, porcelain, chrome, glass and wood
- Available in multiple colors for color coding by area or application
- Can be extensively laundered



ITEM	DESCRIPTION	SIZE	CS QTY	MIN ORDER
LFK300	Green	16" L x 16" W	12/bg; 15 bgs./cs	1 bg
LFK400	Pink	16" L x 16" W	12/bg; 15 bgs./cs	1 bg
LFK450	Red	16" L x 16" W	12/bg; 15 bgs./cs	1 bg
LFK500	Blue	16" L x 16" W	12/bg; 15 bgs./cs	1 bg
LFK505	Royal Blue	16" L x 16" W	12/bg; 15 bgs./cs	1 bg
LFK520	Black	16" L x 16" W	12/bg; 15 bgs./cs	1 bg
LFK550	Purple	16" L x 16" W	12/bg; 15 bgs./cs	1 bg
LFK700	Yellow	16" L x 16" W	12/bg; 15 bgs./cs	1 bg
LFK970	White	16" L x 16" W	12/bg; 15 bgs./cs	1 bg
LFKS300	Green	12" L x 12" W	12/bg; 15 bgs./cs	1 bg
LFKS500	Blue	12" L x 12" W	12/bg; 15 bgs./cs	1 bg

Light Weight Microfiber Cloths

These economy cloths are a lightweight option that dry quickly after use.

- Perfect for general-purpose cleaning of a variety of surfaces
- Available in five colors for color coding by area or application
- Can be extensively laundered



ITEM	DESCRIPTION	SIZE	CS QTY	MIN ORDER
LFK301	Green	16" L x 16" W	12/bg; 20 bgs./cs	1 bg
LFK401	Pink	16" L x 16" W	12/bg; 20 bgs./cs	1 bg
LFK451	Red	16" L x 16" W	12/bg; 20 bgs./cs	1 bg
LFK501	Blue	16" L x 16" W	12/bg; 20 bgs./cs	1 bg
LFK701	Yellow	16" L x 16" W	12/bg; 20 bgs./cs	1 bg



Microfiber Dual-Textured Bar Towel

Two sides with alternate ribbed patterns double the usefulness of this towel.

- Ribbed side has deep channels, trapping larger particles for heavy-duty clean up
- Smooth side is ideal for lighter jobs like dusting or wiping down surfaces
- Part of a Green Clean system due to less water and chemical usage
- Removes 99% of bacteria with water alone



ITEM	DESCRIPTION	SIZE	CS QTY	MIN ORDER
LFRT1000	White	14" L x 17" W	12/bg; 15/bgs./cs	1 bg



▲ LFRT1000

Microfiber Waffle Weave Bar Towel

Virtually lint-free, this woven design provides excellent surface contact.

- Absorbs more than seven times its weight in liquid, much more than conventional bar towels
- Extremely durable - will last through hundreds of wash cycles
- Microfiber is resistant to bacteria growth
- Removes 99% of bacteria with water alone



ITEM	DESCRIPTION	SIZE	CS QTY	MIN ORDER
LFWT1000	White	14" L x 17" W	12/bg; 15/bgs./cs	1 bg



▲ LFWT1000

Mesh Laundering Bag

Perfect for containing your mopping and towel products while laundering.

- Drawstring closure secures bag contents
- Use this bag to protect your launderable cleaning items
- Synthetic material allows for quick drying



ITEM	DESCRIPTION	SIZE	CS QTY	MIN ORDER
CH015	White	16" W x 33 ¼" H	12/cs	1 ea



▲ CH015